

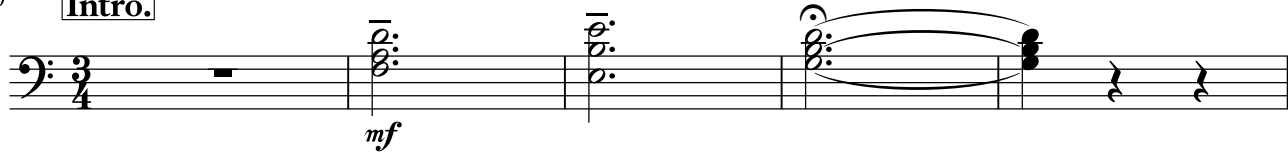
Trombone

Ju te vuex

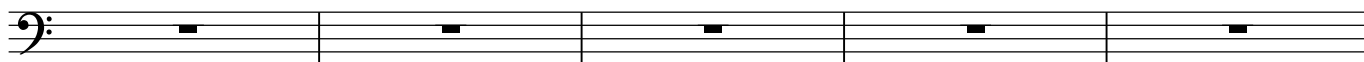
Erik Satie
Arr for Orchestra

♩ = 180

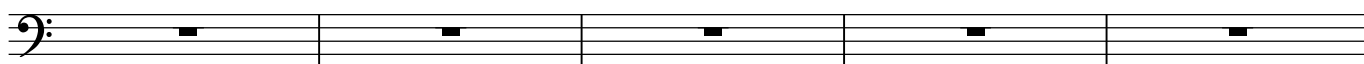
Intro.



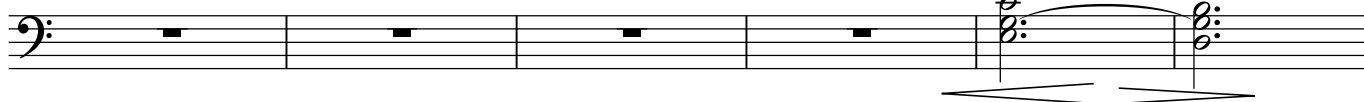
A



11



16



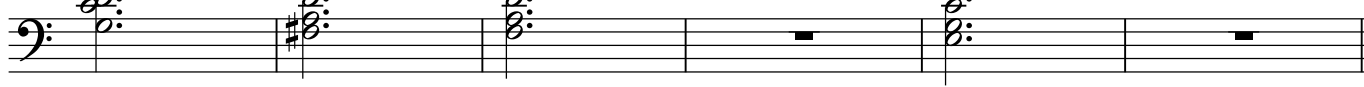
22



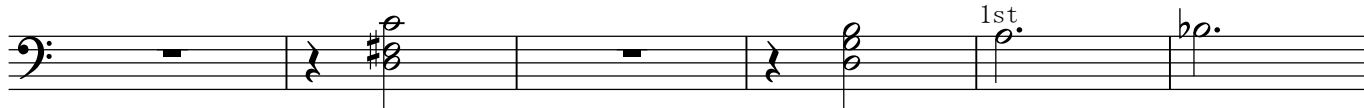
27



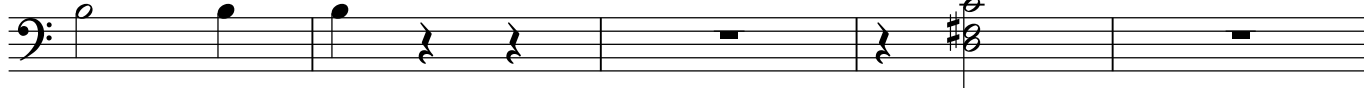
32



B



44

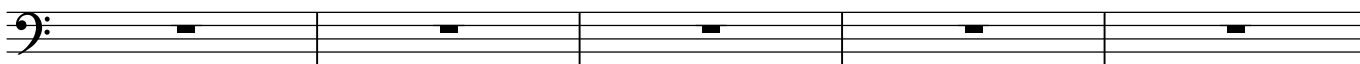


49

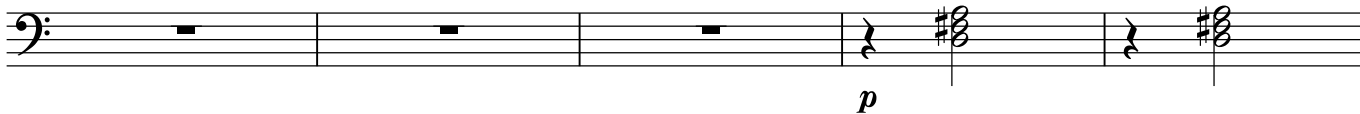


Ju te vuex

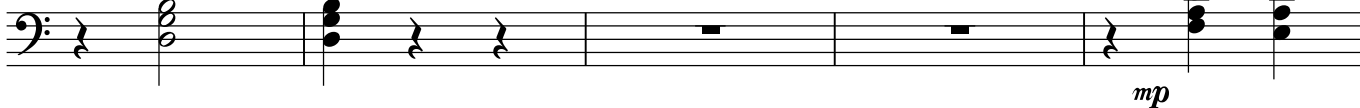
54



59



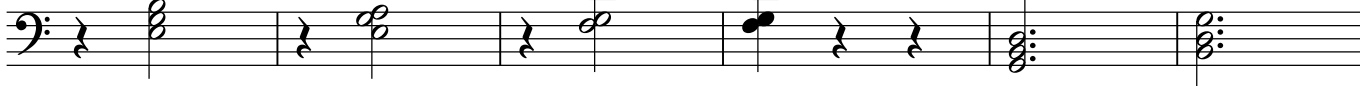
64



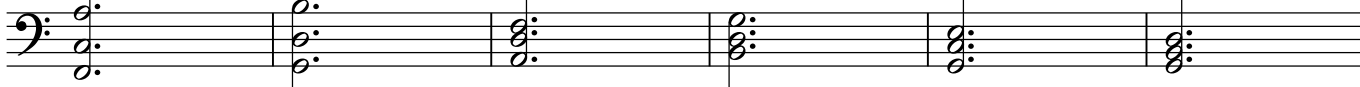
69



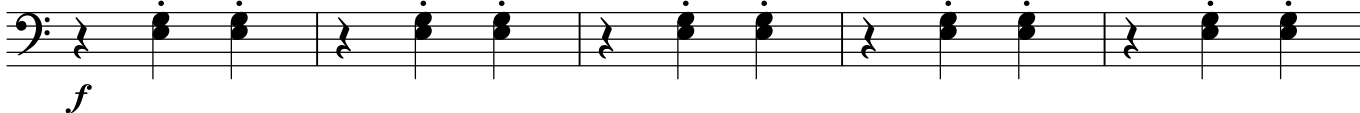
74



80



86



91



96



102



107



Ju te vuex

112

Example 112

117

Fine *mf*

E

[illegible]

128



Measure 128: Bass clef, key signature of one flat (B-flat), and a single eighth note on the second line of the staff.

133

mf

138

Musical notation for measure 138, bass clef, B-flat key signature. The melody consists of quarter notes G2, F2, E2, D2, C2, B1, A1, G1, with a final whole note chord of G1, F1, E1, D1. A slur covers the first four notes, and another slur covers the last two notes of the melody.

143

f

D.C. al Fine